



18 Ockfields

Milford Surrey GU8 5JT

Asking Price: £399,500 Freehold

- No Onward Chain
- Short Walk of Village Centre
- Cul-De-Sac Location
- Living/Dining Room
- Kitchen
- Three Bedrooms
- Bathroom
- Front & Rear Gardens
- Garage in Nearby Block
- Residents Amenity Area



An attractive three bedroom mid terraced house with garage and garden set at the end of a small cul de sac in the popular Ockfields development. The property occupies a great location being only a few moments from Milford village centre with its excellent shops, leisure and recreational facilities, as well as popular schools, nearby bus routes and main line station to Waterloo.





Main Line Station – 0.7 miles (Waterloo approx. 55 mins)

Village Centre – 0.1 miles Godalming – 2.0 miles

Infant School – 0.1 miles Junior School – 2.0 miles

Secondary School – 0.7 miles

Doctors – 0.1 miles Dentist – 0.3 miles

A3 – 1 mile M25 – 15.5 miles M3 – 14.0 miles

Council Tax Band – E Payable – £3028.50 (2025/26)

EPC Rating – D

Maintenance of Amenity Area – Approx. £50 per Year



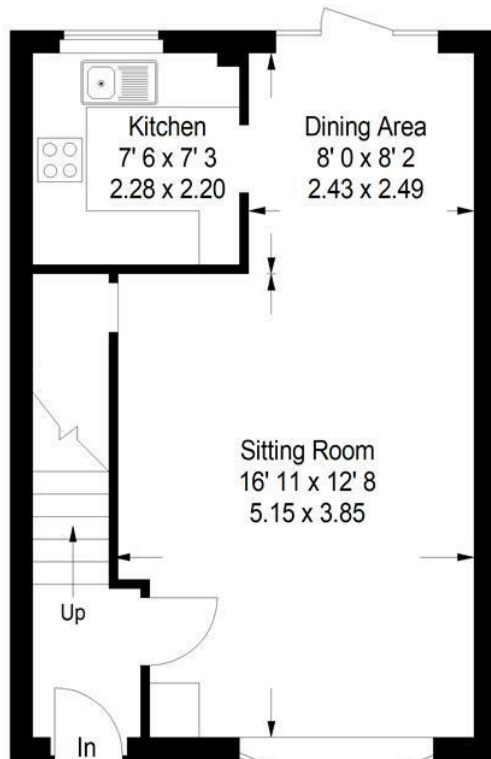
Leave Godalming in a southerly direction on the A3100 and at the roundabout by the Inn on the Lake take the right hand exit continuing under the railway bridge and on into the Portsmouth Road. Continue along the Portsmouth Road towards Milford village and on reaching the village take the first exit left at the mini roundabout passing the shops and then take the second turning on your left hand side into Ockfields. Continue into Ockfields bearing round to the right and number 18 will be found at the end of the cul-de-sac on your right hand side.



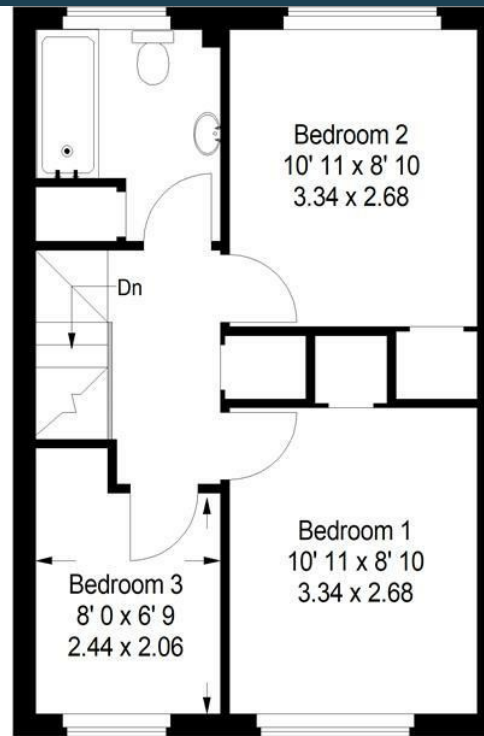
18 Ockfields Milford

APPROX. GROSS
INTERNAL FLOOR AREA
(excluding garage)
800 SQFT / 74 SQM

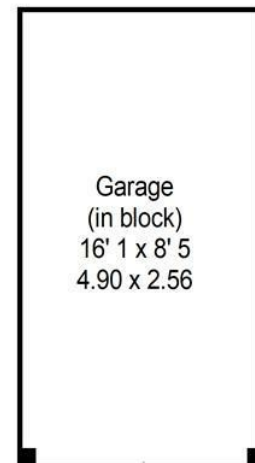
zoopla



Ground Floor



First Floor



This plan is for representation purposes only as defined by the RICS Code of Measuring Practice. Not drawn to scale unless stated. Please check all dimensions before making any decisions reliant upon them.

PrimeLocation.com

A member of  OnTheMarket.com



**Emery &
Orchard**
ESTATE AGENTS

01483 419 300

20 High Street
Godalming
Surrey
GU7 1EB

email:office@emery-orchard.co.uk

Note: These details are intended as a guide only and whilst believed to be correct are not guaranteed and they do not form part of any contract. We would inform prospective purchasers that we have not tested any equipment, appliances, fixtures, fittings or services. Any items not referred to in these particulars are excluded from the sale unless separately agreed. The distance to services & schools are approximate and given as a guide only. Prospective purchasers must check the admission policy for any school mentioned as these may vary.

